



**Siddharth Vikram Singh, IFS
District Forest Officer, Khammam.**

Dated 01.04.2026



Forest Clearance (FCA) Workflow Optimization

Comprehensive 2026 Strategic Roadmap & Compliance Framework

Regulated by Van (Sanrakshan Evam Samvardhan) Adhiniyam, 1980

The Legal Landscape

Evolving Jurisprudence & Regulatory Framework

2026 LEGISLATIVE ENVIRONMENT

The 1980 Legacy

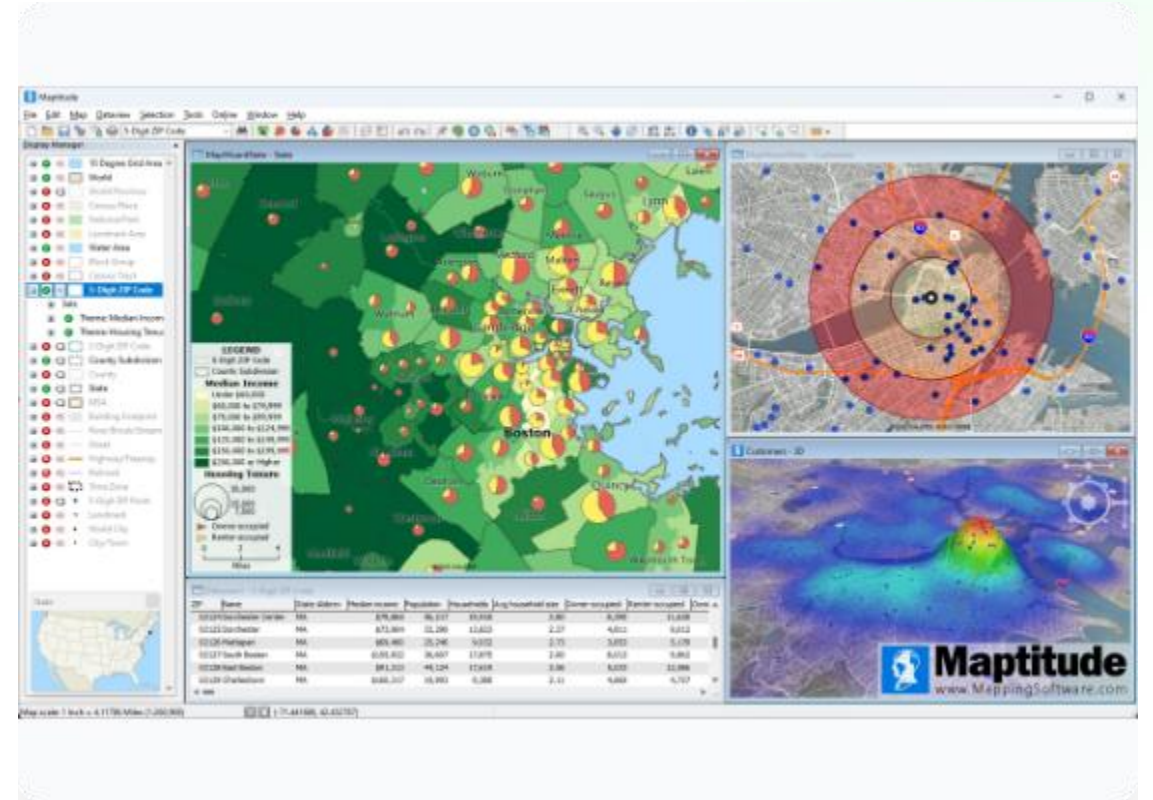
The original Forest (Conservation) Act, 1980 established the core mandate: no diversion of forest land for non-forest purposes without Central Government prior approval.

2023/2026 Enhancements

Modern updates focus on "Samvardhan" (Augmentation). Key shifts include exempting certain strategic infrastructure while tightening compensatory measures.

PARIVESH 2.0 INTEGRATION

- ✓ **Single Window System:** A unified portal for Forest, Environment, and Wildlife clearances.
- ✓ **Permanent Project ID:** Every proposal is assigned a unique ID that tracks the entire lifecycle.
- ✓ **Data Synchronization:** Prevents mismatch between departmental filings.
- ✓ **Real-time Dashboard:** UA can monitor the "Clock" status at various levels of scrutiny.



Phase I: Proposal Initiation

The Foundation of a Successful Clearance

USER AGENCY (UA) READINESS



Enterprise KYC

Mandatory registration of the User Agency and designated officials on the portal with Aadhaar-linked e-Sign.



Bharat Maps

Authentication of KML files through Bharat Maps is now a prerequisite before any form upload.



DPR Upload

Detailed Project Reports must be uploaded, showing complete justification for forest land requirement.

DECODING THE FORMS (A-E)

Form Type	Application Scope	Mandatory Attachment
Form A	Fresh diversion for new projects	KML of Project & CA Land
Form B	Renewal of existing leases	Past Compliance Report
Form C	Prospecting/Exploration of Minerals	Drilling Plan & Borehole Details
Form D	De-reservation of Forest Land	Alternative Land Justification
Form E	Linear Projects (RoW)	Width & Alignment Geometry

MINERAL PROSPECTING

Form C is dedicated to exploration activities. It requires a specific borehole-wise KML and limits forest damage to the minimum footprint required for drilling. Successful Form C applications in 2026 must demonstrate no permanent structure creation and full restoration plans for borehole sites.



THE "SUITABILITY" THRESHOLD

5.0

Hectares Threshold

The PSC Gatekeeper

Proposals exceeding 5 Ha are strictly reviewed by the **Project Screening Committee (PSC)**. The PSC evaluates the "Essentiality" of the project before the DFO begins the site inspection.

Phase II: Technical Scrutiny

Ground Verification & Legal Mapping

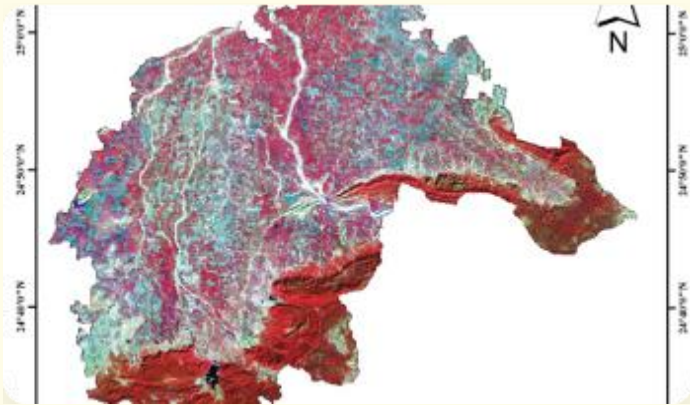
DFO SITE INSPECTION REPORT

Key Parameters of the SIR

- ✓ **Eco-Sensitivity:** Check for proximity to National Parks/Wildlife Sanctuaries.
- ✓ **Tree Density:** Enumeration of trees and species-wise classification.
- ✓ **Land Category:** Verification of Reserved (RF), Protected (PF), or Unclassed (UF).
- ✓ **Working Plan Alignment:** Ensuring the diversion doesn't violate the 10-year Working Plan of the Division.



COMPENSATORY AFFORESTATION (CA) LAND



GIS Suitability

CA land must be suitable for afforestation and verified via satellite imagery.



Mutation Status

Non-forest land (NFL) must be transferred and mutated to the Forest Department.



Ecological Value

The goal is to create a density equivalent to or better than the diverted area.

Phase III: State & Central Approvals

The Path to Stage-I In-Principle Consent

NODAL OFFICER & PCCF REVIEW

Technical Vetting

The State Nodal Officer (FCA) reviews all divisional reports. If inconsistencies are found, they raise **Essential Details Sought (EDS)**, which stops the processing clock.

Recommendation

Upon satisfaction, the State Government uploads its final recommendation to the Central Government (IRO or MoEF Headquarters).

NODAL OFFICER & PCCF REVIEW

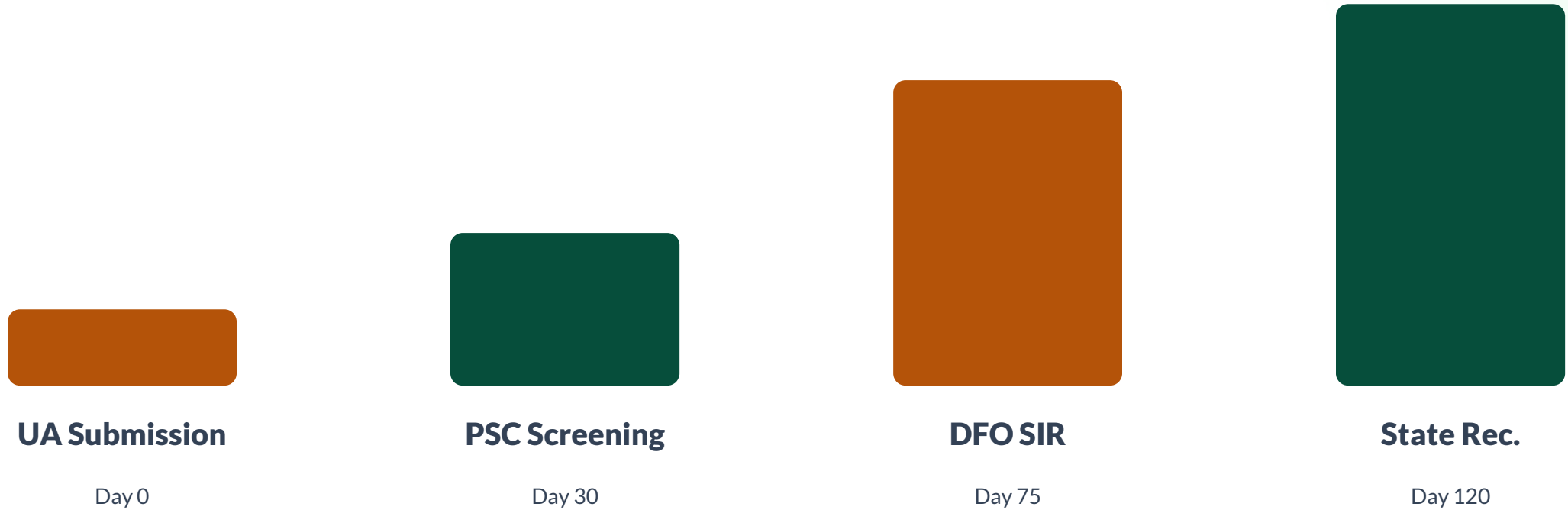




vivo Y100

Feb 19, 2026, 11:39

THE APPROVAL TIMELINE (SLA)



Total projected timeline for Stage-I: 150-180 Days (excluding EDS response time).

REC VS FAC DECISION MAKING

Regional vs Central Jurisdiction

- ✓ **Regional (REC):** Deals with smaller areas (usually < 40 Ha) and linear projects at the Integrated Regional Office (IRO).
- ✓ **Central (FAC):** The Forest Advisory Committee reviews large-scale diversions (> 40 Ha) or sensitive habitats.
- ✓ **Final Authority:** The MoEF&CC grants the In-Principle (Stage-I) approval based on these recommendations.



Phase IV: Stage-I Compliance

Unlocking the Final Approval

FINANCIAL OBLIGATIONS: NPV

10.0x

Maximum Penal NPV

2026

Updated Rate Slab

Net Present Value (NPV)

NPV is a mandatory payment to the National/State CAMPA account. It is determined by the "Eco-value class" of the forest being diverted. Updated 2026 guidelines apply a premium to high-carbon sequestration zones.

Prohibited: Starting work before depositing NPV is a blacklisting offense.

FOREST RIGHTS (FRA 2006)

Settlement of rights for Tribal and Traditional Forest Dwellers is mandatory. The District Collector must issue a certificate confirming that Gram Sabhas have been consulted and all claims are settled. No Stage-II clearance is possible without the FRA Compliance Certificate.



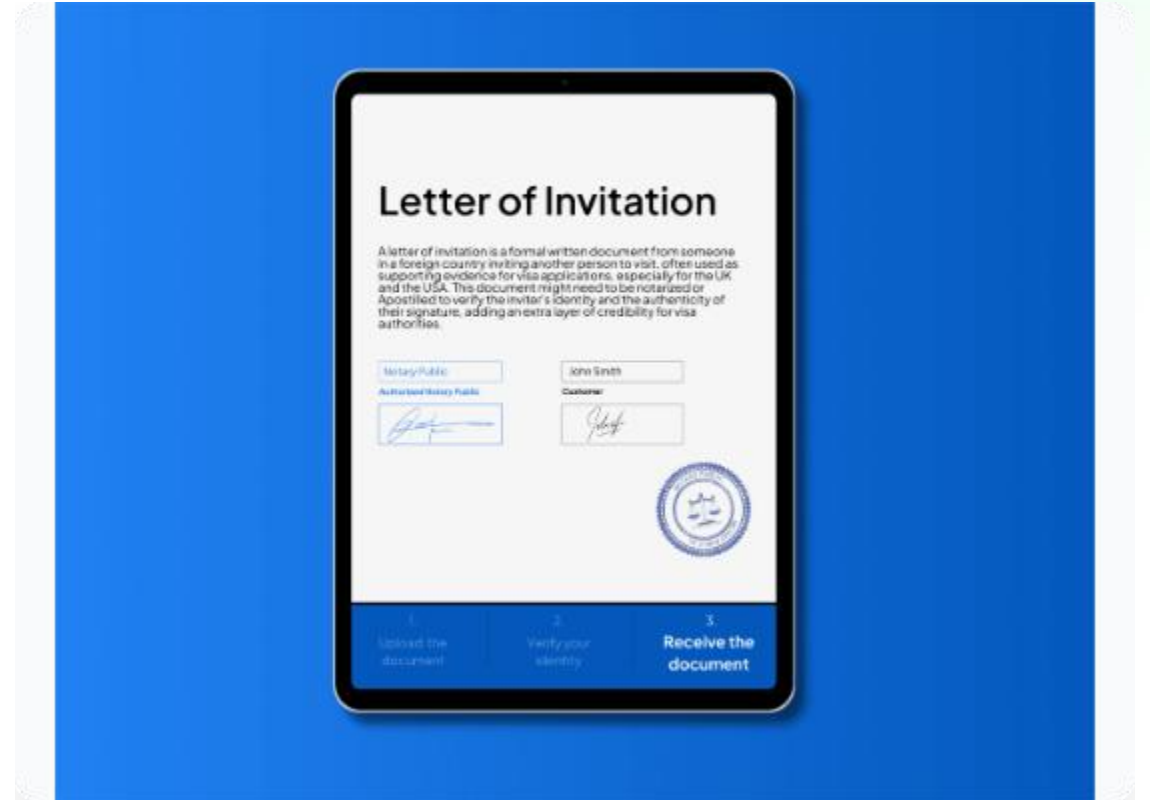
Phase V: Final Approval & Handover

Implementation and Operational Compliance

STAGE-II (FINAL) CLEARANCE

Verification Checklist

- ✓ Deposit of all financial dues (NPV, CA, Wildlife Mitigation).
- ✓ Mutation and transfer of NFL to Forest Dept.
- ✓ Submission of Compliance Verification Report by DFO.
- ✓ **Section 2 Order:** The State Government issues the formal order for "Handing over of Forest Land."



POST-APPROVAL COMPLIANCE



e-Green Watch

Mandatory geo-tagging of all afforestation sites and project activity boundaries for satellite monitoring.



6-Monthly Reports

Digital submission of compliance status every six months on PARIVESH 2.0 dashboard.



Penal NPV

Strict penalties (up to 10x NPV) if the User Agency breaches the diverted boundary or fails in CA obligations.

Strategic Recommendations

To ensure a seamless FCA clearance in 2026, User Agencies must prioritize GIS-ready mapping, early stakeholder engagement for FRA compliance, and strict adherence to Bharat Maps authentication. A proactive approach to Compensatory Afforestation land selection significantly reduces the risk of rejection at the PSC level.

Questions & Discussion

Thank you for your attention to Environmental Stewardship.

contact.support@parivesh.gov.in

www.parivesh.nic.in